

# Photoshop: Sharpen Tools

“Sharpening enhances the definition of edges in an image. Whether your images come from a digital camera or a scanner, most images can benefit from sharpening.” - Adobe Support

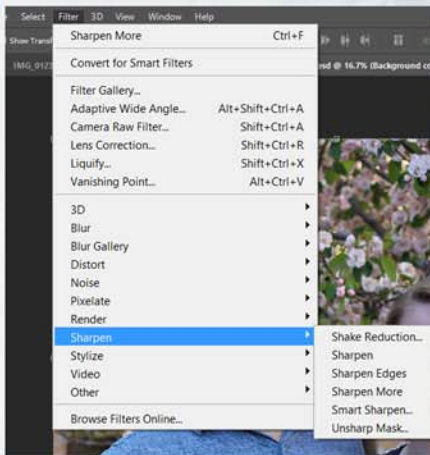
Before



After

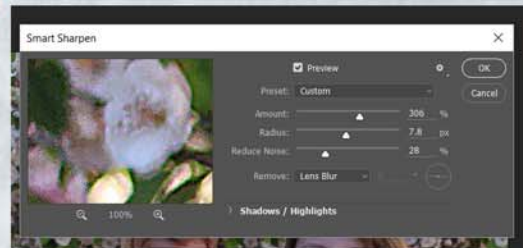


1



First copy the background layer by hitting cmd+J. There are several options under the sharpening filter options>sharpen. We're going to focus on the “Smart Sharpen...” tool.

2



Depending on each photo and how it looks in the preview you can adjust the levels until you get the desired look on the photo.

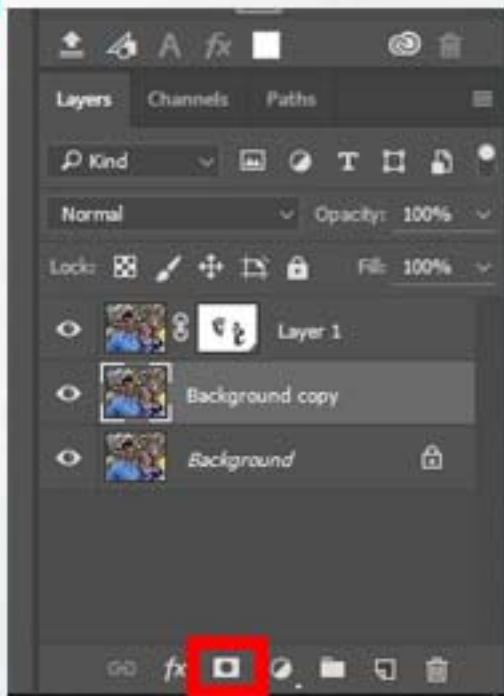
3

When sharpening images with people in them you will notice that often times the skin gets pixelated. Sharpening is especially good for: eyes, lips, hair, and clothes.

In the next step we will add a layer mask to smooth out the skin but leave the crisp sharpening in the other parts of the image.



4



Add a layer mask on top of the background copy by clicking on the button boxed in red above.

5

With the layer mask selected, select your brush tool and make sure you're painting black (to eliminate the sharpening effect). Change the opacity of the brush to somewhere around 50-70. Paint over the skin, but not the eyes, lips, and hair - those should remain sharpened.

This will make it so that the skin stays smooth rather than pixelated.

6



If there is additional touch up sharpening you would like to do you may do so by using the sharpening tool from the side palette.

7

Take a look at the difference between the two photos (the sharpened vs the sharpened one) and admire!!! :)